

RCA-A5R

ROBO Cylinder Arm Type Side-Mounted Motor 52mm Width 24V Servo Motor Ball Screw

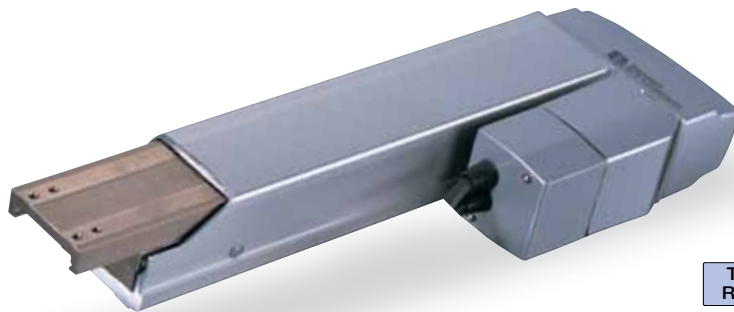
■ Configuration: **RCA** — **A5R** — — **20** — — — — —

Series — Type — Encoder — Motor — Lead — Stroke — Compatible Controllers — Cable Length — Option

I : Incremental 20 : 20W servo motor 12 : 12mm 50 : 50mm A1 : ACON N : None
 A : Absolute motor 6 : 6mm 200 : 200mm RACON P : 1m
 * ASEL can only be used as the absolute encoder. (50mm pitch increments) ASEL S : 3m
 Simple absolute encoders are considered incremental. A3 : AMEC M : 5m * See Options below
 * Be sure to specify which side the motor is to be mounted (ML/MR).
 X : Custom R : Robot cable

* See page Pre-35 for an explanation of the naming convention.

Power-saving



Technical References P. A-5

- 4 POINT Notes on Selection**
- (1) When the stroke increases, the maximum speed will drop to prevent the ball screw from reaching the critical rotational speed. Use the actuator specification table below to check the maximum speed at the stroke you desire.
 - (2) The load capacity is based on operation at an acceleration of 0.2G. This is the upper limit of the acceleration.

Actuator Specifications

■ Lead and Load Capacity

Model	Motor Output (W)	Lead (mm)	Max. Load Capacity		Rated Thrust (N)	Stroke (mm)
			Horizontal (kg)	Vertical (kg)		
RCA-A5R-①-20-12-②-③-④-B-⑤	20	12	-	2	33.3	50~200 (50mm increments)
RCA-A5R-①-20-6-②-③-④-B-⑤		6	-	4		65.7

Legend: ① Encoder ② Stroke ③ Compatible controller ④ Cable length ⑤ Options (Unit: mm/s)

■ Stroke and Maximum Speed

Lead	Stroke	
	50 ~ 200 (50mm increments)	50 ~ 200 (50mm increments)
12	400	
6	200	

Encoder & Stroke List

② Stroke (mm)	Standard Price	
	① Encoder	
	Incremental	Absolute
50	-	-
100	-	-
150	-	-
200	-	-

④ Cable List

Type	Cable Symbol	Standard Price
Standard Type	P (1m)	-
	S (3m)	-
	M (5m)	-
Special Lengths	X06 (6m) ~ X10 (10m)	-
	X11 (11m) ~ X15 (15m)	-
	X16 (16m) ~ X20 (20m)	-
	R01 (1m) ~ R03 (3m)	-
Robot Cable	R04 (4m) ~ R05 (5m)	-
	R06 (6m) ~ R10 (10m)	-
	R11 (11m) ~ R15 (15m)	-
	R16 (16m) ~ R20 (20m)	-
	R16 (16m) ~ R20 (20m)	-

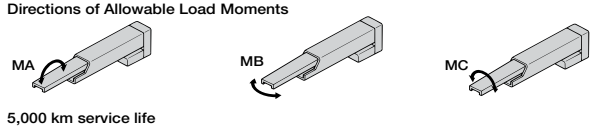
* See page A-39 for cables for maintenance.

⑤ Option List

Name	Option Code	See Page	Standard Price
Brake (standard)	B	→ A-25	-
Power-saving	LA	→ A-32	
Bottom-mounted motor	MB	→ A-33	
Right-mounted motor	MR	→ A-33	
Left-mounted motor	ML	→ A-33	
Reversed-home	NM	→ A-33	

Actuator Specifications

Item	Description
Drive System	Ball screw ø8mm C10 grade (ball screw speed reduced by 1/2 by timing belt)
Positioning Repeatability	±0.02mm
Lost Motion	0.1mm or less
Base	Material: Aluminum (white alumite treated)
Allowable Load Moment	Ma: 4.5 N-m Mb: 5.4 N-m Mc: 4.1 N-m
Ambient Operating Temp./Humidity	0 ~ 40°C, 85% RH or less (non-condensing)



319 RCA-A5R

